



15 Hewley Street

, Middlesbrough, TS6 0RD

£90,000



15 Hewley Street

, Middlesbrough, TS6 0RD

£90,000



HALLWAY

11'4" x 3'4" (3.45m x 1.02m)

Entering through a decorative UPVC double glazed door you will find this bright airy hallway which compromises of grey laminate flooring & white walls. This room gains access to the spacious reception room, dining room & first floor.

RECEPTION ROOM

13'10" x 12'1" (4.22m x 3.68m)

The reception room is the perfect family space and features a sizeable double-glazed bay window looking to the front of the property, providing abundant natural light. The room has the benefit grey laminate flooring with a feature fire and surround.

DINING ROOM

11'8" x 12'3" (3.56m x 3.73m)

The dining room is to the rear of the property and benefits from a large UPVC double glazed window, radiator & painted walls. This room is ideal for a large dining table to spend time with the family and would also fit smaller storage units at ease whilst gaining access to the kitchen.

KITCHEN

15'5" x 5'3" (4.70m x 1.60m)

The kitchen to the property benefits from multiple light wall & base units with the space needed for larger appliances and a understair storage cupboard to the rear to hide away smaller items to make the room look minimal. To the right of the room is a large UPVC double glazed window and UPVC door which gains access to the well maintained garden.

LANDING

9'4" x 6'4" (2.84m x 1.93m)

The landing is split in two levels and gains access to the spacious family bathroom, three bedrooms and loft space.

BEDROOM ONE

13'0" x 12'0" (3.96m x 3.66m)

Bedroom one is a large double Situated to the front of the property with a large UPVC double glazed window, cream carpet and radiator. The room gives that instant wow factor with its feature fire and surround and high ceilings, you are able to fit a large double bed with storage items with ease.

BEDROOM TWO

10'10" x 12'3" (3.30m x 3.73m)

The second bedroom is set to the rear of the

property and comprises carpet, painted walls, fire with feature surround. This room is a large double and would comfortably fit larger storage units at ease and benefits from a large UPVC double glazed window with views of the hills.

BEDROOM THREE

10'1" x 6'9" (3.07m x 2.06m)

The third bedroom is the smallest of the three bedrooms and benefits from a large UPVC double glazed window, painted walls & carpet. This room would comfortably fit a single bed along with smaller storage units and would make the perfect office or children's bedroom.

FAMILY BATHROOM

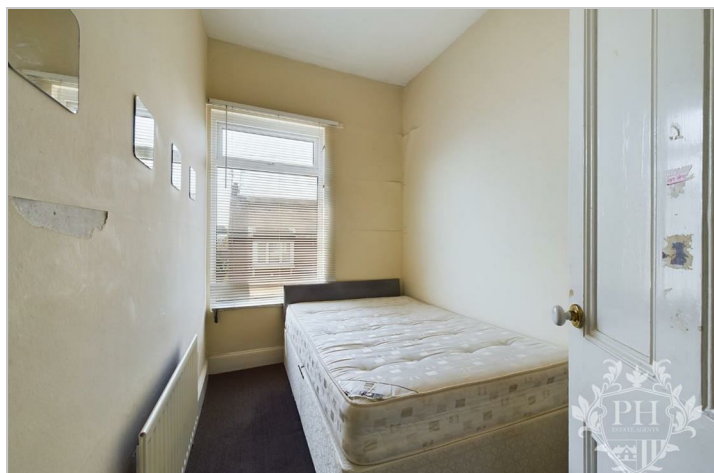
8'3" x 8'5" (2.51m x 2.57m)

This large family bathroom comprises of a white three piece suite which includes a

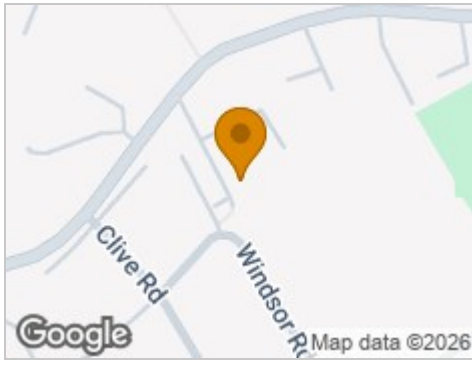
paneled bath with overhead electric shower, hand basin and toilet. Although the bathroom is large in size it is well maintained and benefits from a UPVC double glazed frosted window to the rear aspect.

EXTERNAL

This property offers on-street parking, well maintained rear garden with a small decking area to relax.



Road Map



Hybrid Map



Terrain Map



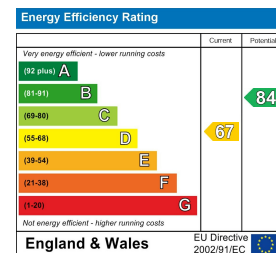
Floor Plan



Viewing

Please contact our Middlesbrough Office on 01642 462153 if you wish to arrange a viewing appointment for this property or require further information.

Energy Efficiency Graph



These particulars, whilst believed to be accurate are set out as a general outline only for guidance and do not constitute any part of an offer or contract. Intending purchasers should not rely on them as statements of representation of fact, but must satisfy themselves by inspection or otherwise as to their accuracy. No person in this firm's employment has the authority to make or give any representation or warranty in respect of the property.